

ACME Cannabis

3 µm, 150 x 4.6 mm

A: 0.1% Formic Acid in Water, (v/v)

B: 0.095% Formic Acid in Acetonitrile, (v/v)

Gradient:

Time (min)	Profile	
	A	B
0	30	70
10	10	90
15	10	90

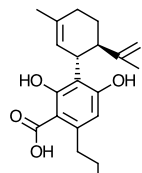
Flow rate: 1.5 mL/min

Temperature: 25 °C

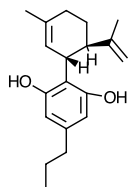
Detection: UV@225 nm

Injection Vol.: 2 µL

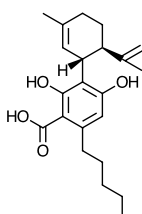
Cannabinoids



1. CBDVA



2. CBDV



3. CBDA

Sample:

1. Cannabidivarinic Acid (CBDVA)

2. Cannabidivarin (CBDV)

3. Cannabidiolic Acid (CBDA)

4. Cannabigerolic Acid (CBGA)

5. Cannabigerol (CBG)

6. Cannabidiol (CBD)

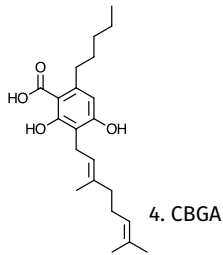
7. Tetrahydrocannabivarin (THCV)

8. Cannabinol (CBN)

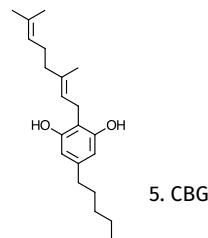
9. Δ9-tetrahydrocannabinol (THC Δ9)

10. Δ8-tetrahydrocannabinol (THC Δ8)

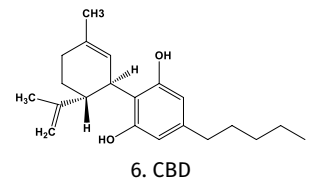
11. Cannabichromene (CBC)



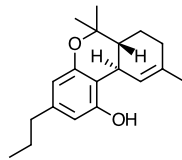
4. CBGA



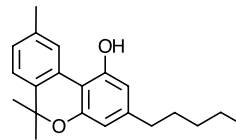
5. CBG



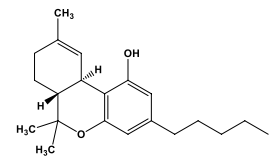
6. CBD



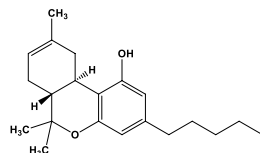
7. THCV



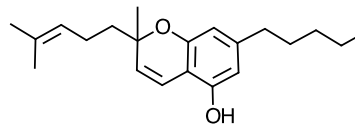
8. CBN



9. THC Δ9



10. THC Δ8



11. CBC

